

The logo for Survitecgroup, featuring a stylized orange 'S' followed by the text 'urvitecgroup' in a black sans-serif font.

Survitecgroup

# MILITARY BOATS

FULLY INFLATABLE AND SEMI-RIGID



survitecgroup

# EXPERIENCE MATTERS

Survitec's DSB brand is synonymous with high quality boat engineering and advanced in-water performance. Leveraging over 8 decades of know-how in the design and manufacture of boats, Survitec has amassed a wealth of critical knowledge on materials construction, precision manufacturing, quality control and testing and certification to engineer a collection of best-in-class solutions that gives users the upper-hand in any operational scenario.



[www.survitecgroup.com](http://www.survitecgroup.com)

▶ **INTELLIGENT  
DESIGNS**



- Performance enhancing patents
- Incredibly durable construction
- Optimised for maximum passenger/ equipment payload

▶ **QUALITY  
ASSURED**



- ISO and Module D certified
- Engineered to SOLAS Rescue Boat standards
- Tested at every stage of manufacture

▶ **UNRIVALLED  
KNOWLEDGE**



- Over 80 years expertise
- Combat Proven across 4 continents
- In-house design and qualification skillset

▶ **CUSTOMER  
FOCUSSED**



- Full customisation capabilities
- Modular and rapidly configurable solutions
- Complete through-life service

## FULLY INFLATABLE BOATS

Manufactured from an ultra-light Hypalon fabric, the versatile DSB inflatable boat range employs weight saving design features to maximise the boats manoeuvrability and reduce the transportation and servicing burden. With a heavy duty reinforced construction and numerous innovative design features, the inflatable boat range is fully adaptable for a variety of applications including fast rescue, infiltration and extraction, and convert missions.

### ► Highly versatile design



Robust construction, lightweight, easily transportable, with excellent handling.

### ► Easy to pack and rapidly deployable



Deployable from helicopters and fixed wing aircraft.

### ► Superior air integrity



Reinforced at multiple critical areas – valves, joints, transom, mechanical components.

### ► Low maintenance burden



In-field repair capabilities, all elements can be replaced if damaged.

### ► Clear deck philosophy

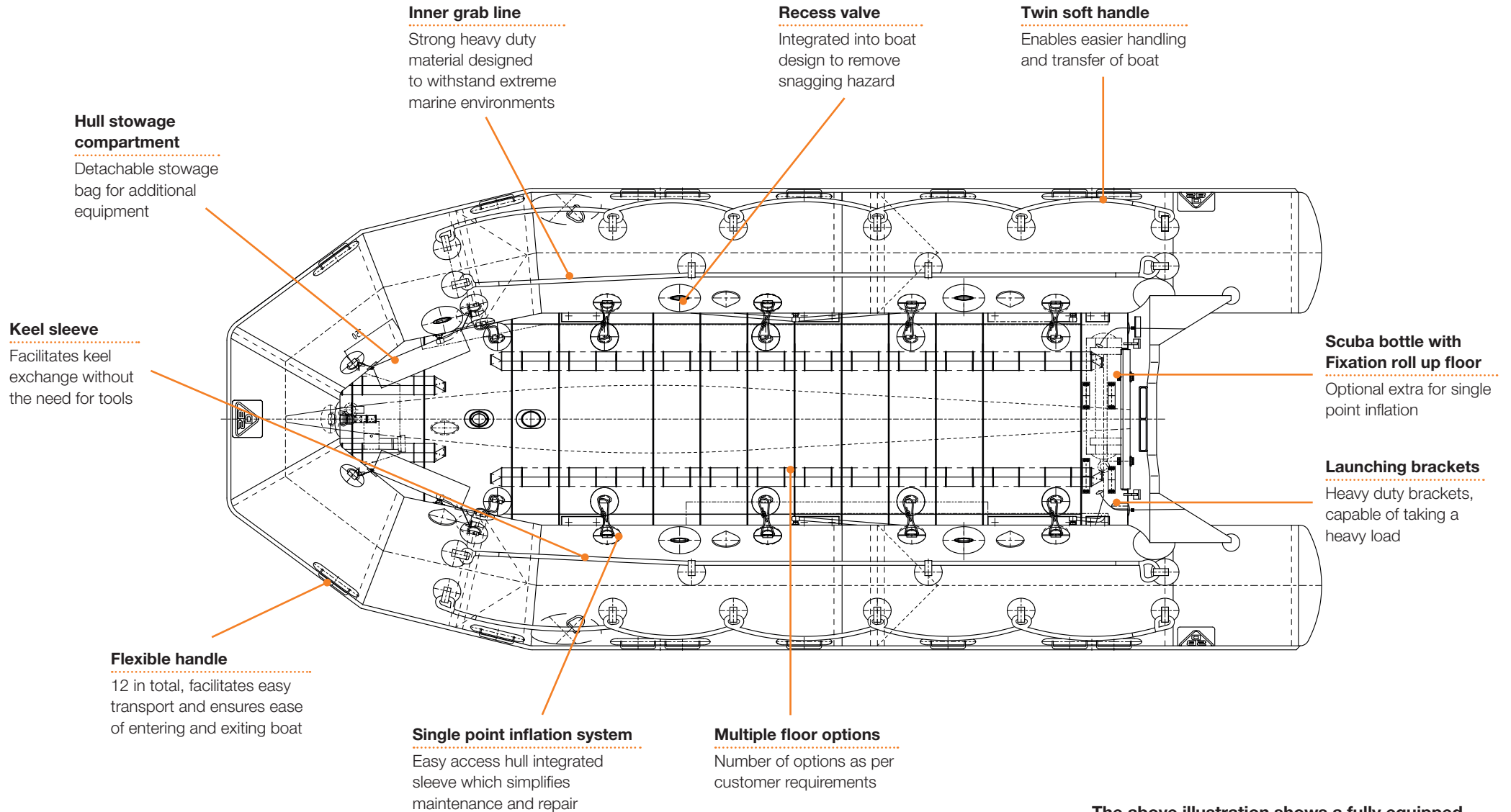


Enhanced space with extra buoyancy tube in front section and hull integrated sleeve.

## Inflatable Boats

### Configurations and Technical information

	2 Man		380 GP		420 GP		470 GP		530 GP		600 GP		380 GPM		420 GPM		470 GPM		530 GPM		580 GPM	
<b>Length overall (m)</b>	2,300		3,800		4,200		4,700		5,300		6,000		3,800		4,200		4,700		5,300		5,800	
<b>Width overall (m)</b>	1,100		1,670		1,800		1,980		2,135		2,600		1,670		1,800		1,955		2,135		2,500	
<b>Length inside (m)</b>	1,720		2,595		2,960		3,420		3,795		4,830		2,595		2,960		3,400		3,795		4,540	
<b>Width inside (m)</b>	0,500		0,760		0,890		0,980		1,035		1,400		0,760		0,890		0,915		1,035		1,160	
<b>Weight hull (kg)</b>	13		44		50		68		82		107		51		57		81		95		122	
<b>Weight wood floor (kg)</b>	-		40		52		63		82		120		41		53		64		83		99	
<b>Weight roll-up floor (kg)</b>	-		35		46		54		73		n.V.		36		47		55		74		89	
<b>Weight aluminium floor (kg)</b>	-		38		50		58		71		103		39		51		59		72		88	
<b>Weight inflatable floor (kg)</b>	-		-		-		-		-		-		9		10,9		12,5		14,5		-	
<b>Buoyancy chambers (Stk)</b>	2		3		5		5		5		6		3		5		5		5		5	
<b>Max. Payload (kg)</b>	155		830		930		1250		1720		2420		830		930		1420		1720		2530	
<b>Crew limit (Stk)</b>	2		6		7		10		12		21		6		7		10		12		16	
<b>Max. Motorization (KW) / (PS)</b>	2	2,7	29,4	40	37	50	44	60	51,5	70	58,8	80	29,4	40	37	50	44	60	51,5	70	73,5	100
<b>Max. Weight motorization (single or twin) (kg)</b>	20		115		125		125		135		185		115		130		140		140		185	
<b>Buoyancy (m³)</b>	0,33		1,22		1,37		1,83		2,55		3,41		1,22		1,37		1,98		2,42		3,52	
<b>Boat inner surface (m²)</b>	0,76		1,82		2,42		2,93		3,58		6,45		1,82		2,42		2,93		3,58		4,96	
<b>Dimensions stowed boat lxbxh (cm)</b>	78x50x20		115x58x30		130x60x35		145x70x40		155x75x42		175x80x40		115x58x30		130x60x35		145x70x40		155x75x42		175x80x40	
<b>Dimensions stowed standard equipment lxbxh (cm)</b>	-		110x63x20		115x70x20		125x68x22		140x68x22		163x130x22		110x63x20		115x70x20		125x68x22		140x68x22		140x87x22	
<b>Tube diameter (cm)</b>	30,00		45,5		45,5		50,0		55,0		60,0		45,5		45,5		52,0		55,0		63,0	
<b>Tube diameter bug (cm)</b>	-		42,0		42,0		45,0		53,0		50,0		42,0		42,0		47,0		53,0		53,0	
<b>Fabric</b>	Hypalon 1100 dtex		Hypalon 1100 dtex		Hypalon 1100 dtex		Hypalon 1100 dtex		Hypalon 1100 dtex		Hypalon 1100 dtex		Hypalon 1670 dtex		Hypalon 1670 dtex		Hypalon 1670 dtex		Hypalon 1670 dtex		Hypalon 1670 dtex	



The above illustration shows a fully equipped military boat and all of its features.

**Front tow sustainment handle**

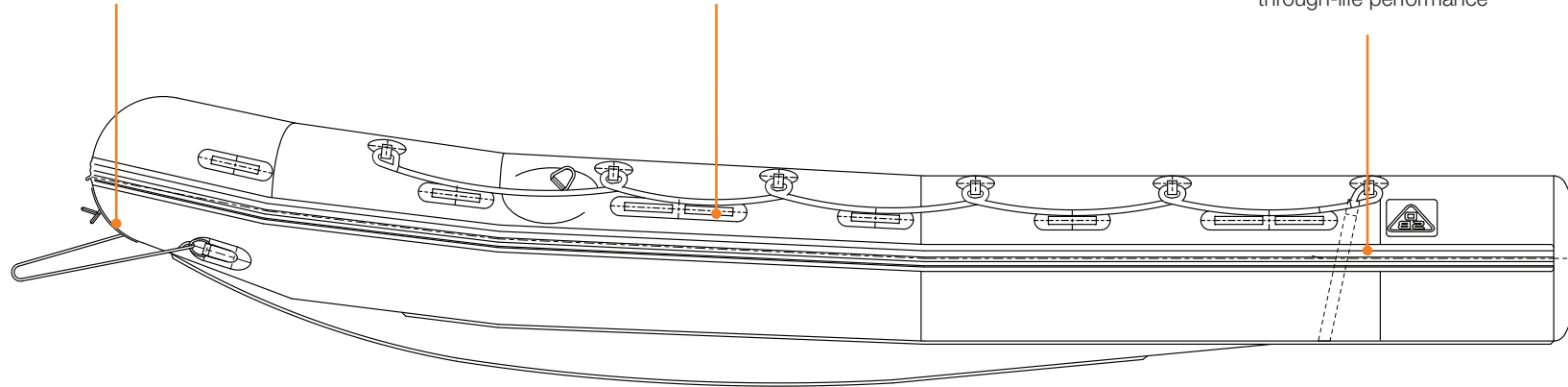
Constructed from stainless steel, ensures safe handling

**Carrying handle**

For easy carrying and rapid manual transport of the boat

**Rubbing strake**

Offers an additional layer of protection for maximum through-life performance



**Drain hose**

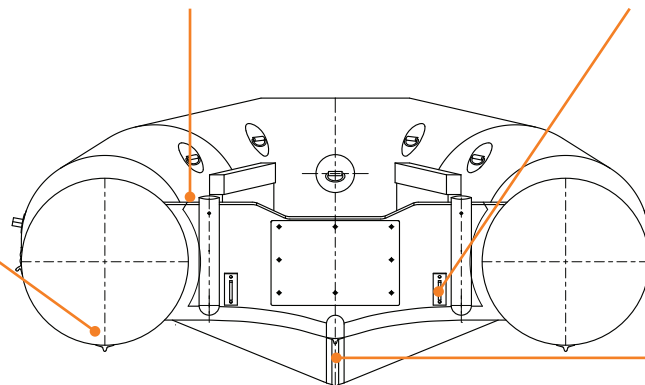
Easy drain function for quick and efficient removal of any water from boat

**Towing bracket, transom**

Constructed from lazer cut steel, ensures safe towing

**Reinforcement tube, underneath**

Reinforced on both sides ensuring added protection during grounding/beaching



**Keel reinforcement**

Added fender tube reinforcement giving additional protection during ground/beaching

## SEMI-RIGID BOATS

The heavy duty, robust semi-rigid boats incorporate maximum durability, increased manoeuvrability and excellent through-life performance. Featuring a durable sea-water-resistant aluminium sandwich hull of frame and stringer construction and an environmentally resilient Hypalon buoyancy tube, each boat possesses a fully modular design capable of incorporating multiple customisable attributions such as helmsman/crew console, navigation systems, seats, stowage and weapons configurations.

### ► Highly quality construction



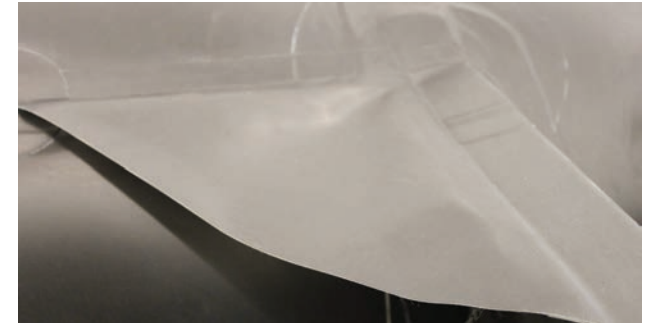
Extremely durable heavy duty hull with coated Hypalon fender.

### ► Excellent in-water performance



Optimal weight to power ratio enables faster acceleration and superior handling.

### ► Intelligent, practical design



Enhanced support/splash guards at vital components, cone chamber separator technology to counteract punctures.

### ► Modular design, fully customisable



Facilitates multiple operating requirements – weapons, med evac, recon, SAR.

### ► Fully integrated electronics



GPS, lighting, night vision, thermal imaging, radar, speedometers, echo sounders.



**Robust aluminium hull structure of frame and stinger construction**

Concealed safety buoyancy chamber ensures full float/payload capability even when fender is uninflated

**Helmmann console**

Full customisation options available as per requirements

**Flush hull integrated lifting brackets**

**Front belaying cleats and brackets module, front towing eyelet**

Two different installation points

**Front re-enforcement modules**

Constructed of durable rubber or aluminium

**Multiple A- frames**

With bespoke outfitting capabilities (navy lights, electronics)

**Self-bailing deck**

Ensures no water retention on boat

**Anti-skid pads**

For proper gripping when standing on boat

**Ergonomic seat**

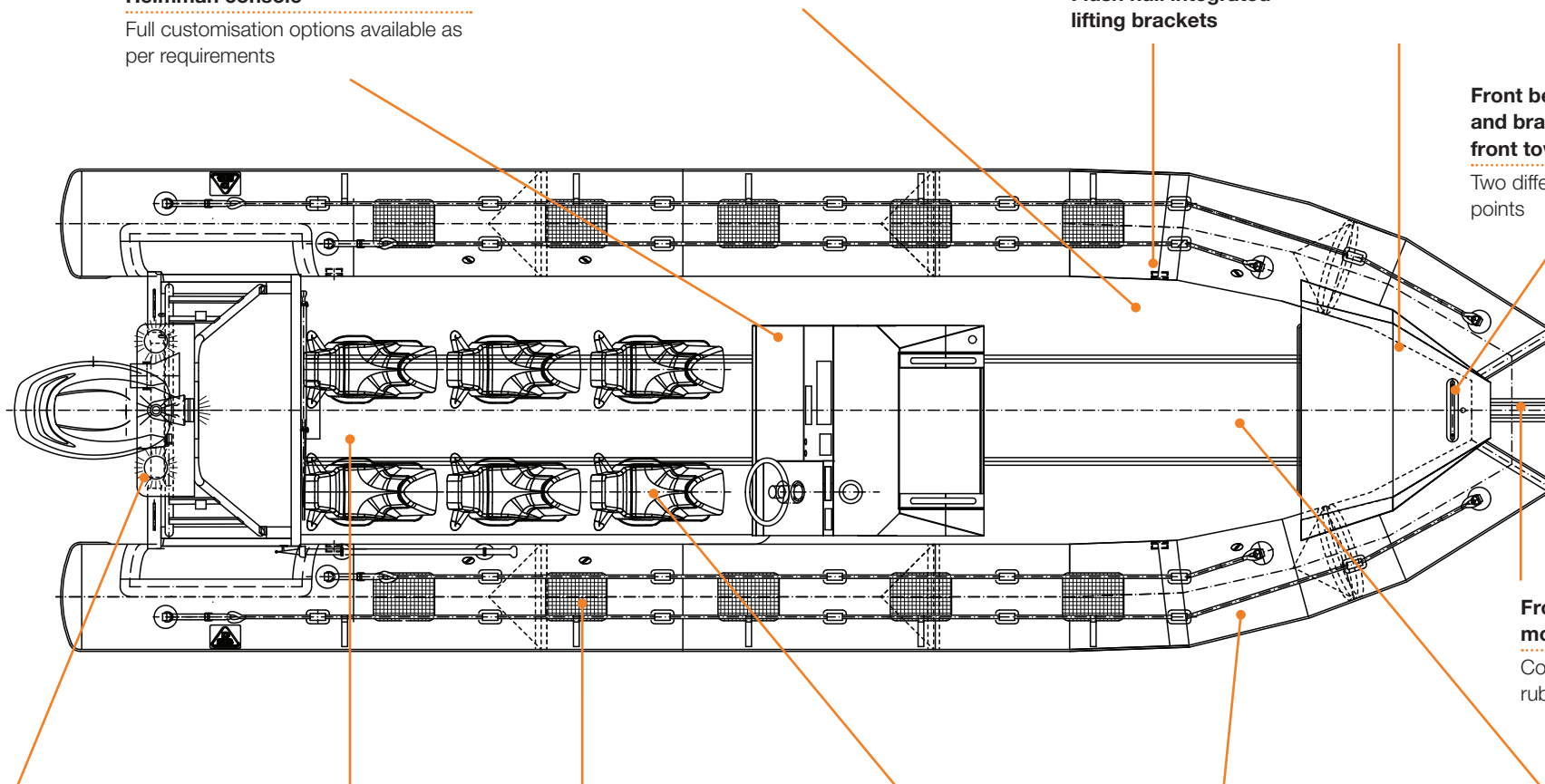
Systems and configuration options available as per customer requirements

**Multiple rope**

Arrangements in loops or straight with sliding handle systems

**Deck integrated installation points**

Facilitates multiple configurations including weapons, medical evacuation.

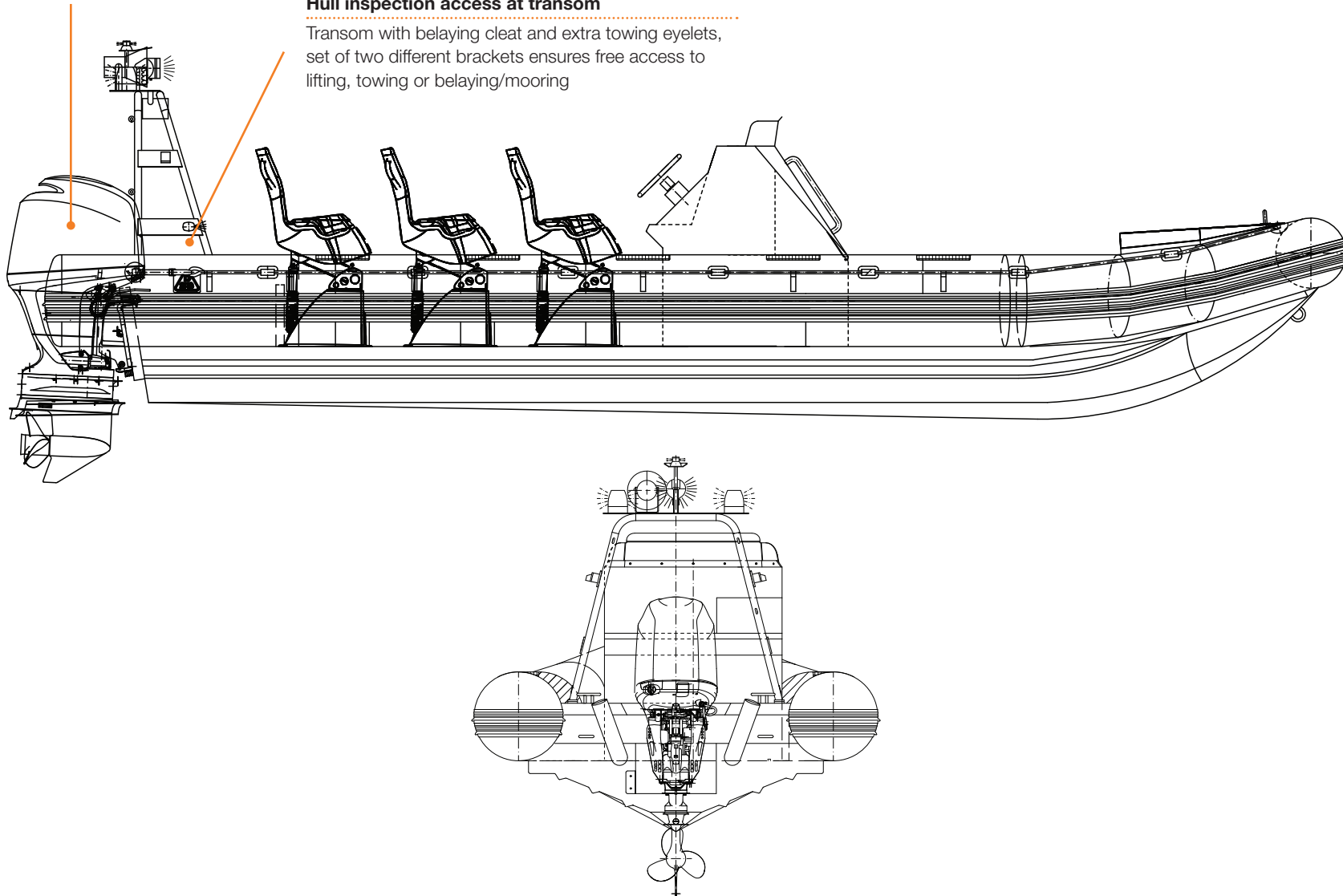


**Single or twin outboard configuration and inboard engines**

Options available as per customer requirements

**Hull inspection access at transom**

Transom with belaying cleat and extra towing eyelets, set of two different brackets ensures free access to lifting, towing or belaying/mooring



## USER DEFINED DESIGNS

Customise each element of your boat to ensure a tailored fit to your operational needs

▶ Transom



▶ Helmsman console



▶ Engines



▶ Electronics



▶ Seats



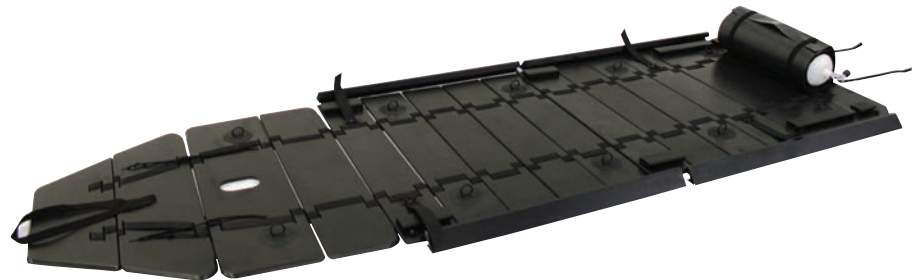
▶ Stowage



▶ Anchor



▶ Floor



## Customisation

Feature	Options
<b>Transom Outfit</b>	<ul style="list-style-type: none"> <li>• Light Stick</li> <li>• A-Frame Single</li> <li>• A-Frame</li> </ul>
<b>Helmsman Console</b>	<ul style="list-style-type: none"> <li>• Front</li> <li>• Centre</li> <li>• Rear</li> </ul>
<b>Engines</b>	<ul style="list-style-type: none"> <li>• Make</li> <li>• Model</li> <li>• Output Capacity</li> </ul>
<b>Electronics</b>	<ul style="list-style-type: none"> <li>• Navigation</li> <li>• Echo Sounders</li> <li>• Lighting</li> <li>• Speedometers</li> <li>• Night Vision</li> <li>• Thermal Imaging</li> <li>• Radar Over</li> </ul>
<b>Seats</b>	<ul style="list-style-type: none"> <li>• Quality</li> <li>• Standard</li> <li>• Attenuating</li> </ul>
<b>Stowage</b>	<ul style="list-style-type: none"> <li>• Type</li> <li>• Location</li> <li>• Size</li> </ul>
<b>Anchor</b>	<ul style="list-style-type: none"> <li>• Type</li> <li>• Material</li> </ul>
<b>Floor</b>	<ul style="list-style-type: none"> <li>• Inflatable</li> <li>• Roll Up</li> <li>• Segmented</li> </ul>



## EQUIP YOUR BOAT'S CREW

### One source for all your safety survival needs

Survitec Group offers the complete package in maritime survival operations. Equip your crew in full head to toe maritime survival equipment from Survitec including coveralls and survival suits, lifejackets and armour capable vests with soft/hard armour and flotation capabilities.

Survival suits

Life preservers

Medical equipment

Covert liferafts

For the complete range visit  
[www.survitecgroup.com](http://www.survitecgroup.com)







### **Copyright Notice**

The copyright, trademarks, domain names and other intellectual property rights in all material and information in this presentation belongs to Survitec Group Limited. All rights are reserved.

### **Disclaimer**

This document provides general information about Survitec Group and its companies, its products and services, and summarises general capabilities and offerings which we deem to be of relevance to our customers. Whilst Survitec has taken appropriate steps to ensure the accuracy of the information contained in this document, Survitec gives no warranty regarding the accuracy or completeness of such information.

This presentation was prepared to provide information and does not constitute a contract. Survitec reserves the right, without prior notice, to change, delete, supplement, or otherwise amend at any time the information, images, and offerings contained in this presentation, or other documents. Survitec shall not be liable for any loss or damage of whatever nature (whether direct, indirect, consequential or other) that may arise as a result of any third party relying on the information contained in this document (but nothing in this disclaimer excludes liability for death or personal injury arising from negligence or any fraudulent misrepresentation).

For further detailed information, prices, terms and conditions, customers should contact Survitec at [info@survitecgroup.com](mailto:info@survitecgroup.com)

### **Survitec Group**

Eschershausen - Centre of Excellence for Boats

Angerweg 5, D-37632, Germany

Tel: 0049 55 34 3010 / F: 0049 55 3430 12 00

Email: [info@survitecgroup.com](mailto:info@survitecgroup.com)

[www.survitecgroup.com](http://www.survitecgroup.com)